



How to Fit Guide

*This installation manual is accompanied by an **Installation Video** and can be used in combination.*

Before you begin

- ! Ensure that you have the correct FuelActive unit based on the tank height and fuel flow rate.



Before fitting the FuelActive unit, check that:

- // You have all components in your box
- // The unit is the right size for your fuel tank
- // All fuel is drained from the tank
- // You have cleaned the top of the fuel tank
- // You have all the tools for the job
- // Ensure correct PPE is worn

What's in the box



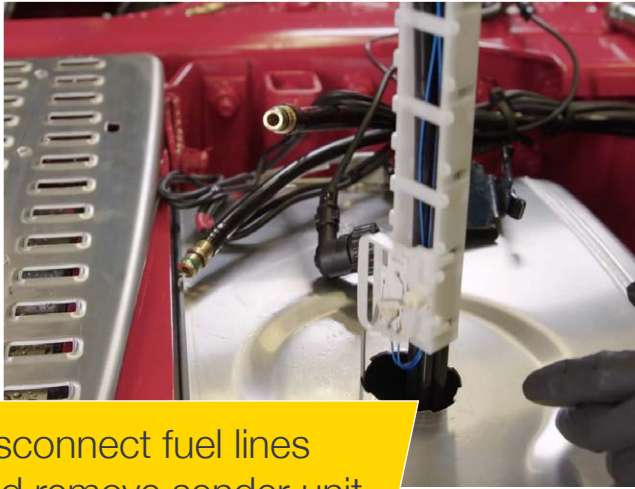
- | | |
|---------------------------------|----------------------------|
| 1. FuelActive Unit | 7. Template Sticker |
| 2. M8 x 16 Flange Bolts | 8. Gasket |
| 3. M6 Countersunk Screws | 9. Fixing Ring |
| 4. M6 Nylock Nuts | 10. O Ring |
| 5. M6 Washers | 11. Fuel Pipe |
| 6. Union | 12. Pipe Bung |

What you'll need

You will need the following tools:

- // Tape measure
- // Side cutters
- // Torch
- // Hammer
- // Centre punch
- // Cordless drill
- // 6mm drill bit
- // Phillips screwdriver/bit
- // Multi-material HSS
bi-metal holesaw
(FA06 is 75 / 76mm, FA10
is 102mm, FA16 is 155mm)
- // Telescopic magnet
- // 27mm spanner
- // 13mm socket
- // Torque wrench
- // Cable ties
- // ½ Round file
- // 10mm spanner

Fitting the unit



! Disconnect fuel lines
• and remove sender unit

Step 1

- // Locate the sender unit
- // Disconnect the fuel lines
- // Remove the unit & ensure it remains undamaged



Step 2

- // Establish where the baffles sit in the tank



Step 3

- // Locate the optimum position for the FuelActive unit
- // Apply the template sticker flat and free from bubbles to ensure correct alignment

Fitting the unit (continued)



Step 4

- /// Create punch holes accurately



Step 5

- /// Use punched holes as guide for the drill



Step 6

- /// Remove the template
- /// Drill out centre hole using 100 – 102mm bi-metal holesaw and cutting fluid

Fitting the unit (continued)



Step 7

- // Drilling causes sharp edges
- // Debur using round file to prevent damage or harm



Step 8

- // Drilling and deburring causes swarf and contaminates the fuel and the tank
- // Clean inside and outside the tank thoroughly



Step 9

- // Place O Ring (10) and Fixing Ring (9) over the hole
- // Ensure they sit correctly

Fitting the unit (continued)



Step 10

- Fit screws (3), washers (5) and nuts (4) into countersunk hole around fixing ring and tighten



Step 11

- Lower the FuelActive unit (1) into place with the gasket (8) to begin the final fit



Step 12

- Check the gasket is in place correctly

Fitting the unit (continued)



Step 13

- Loosely fit the flange bolts and tighten by hand



Step 14

- Tightening the bolts across the top-plate in sequence



Step 15

- Re-fit sender unit
- Ensure level float is operational with full freedom of movement

Fitting the unit (continued)



Step 16

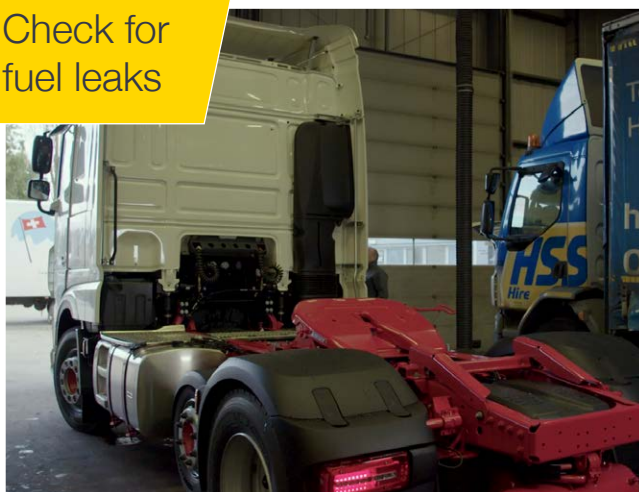
- Connect union to fuel pipe using push-fit connector or vehicle original fuel pipe



Step 17

- Blank off the existing fuel line
- Secure all the remaining pipes and cables

- ! Check for fuel leaks



Step 18

- Fill the tank with fuel
- Prime the fuel system

CONTAMINATION ELIMINATION



- /// Stops Breakdowns
- /// Increases Fuel Efficiency
- /// Reduces Emissions

FUEL ACTIVE

www.fuelactive.com

02/21 Issue 3